

# MATERIAL REQUEST FORM



Lung Cancer Research  
FOUNDATION™

## Shipping information

Salutation \_\_\_\_\_ First Name \_\_\_\_\_ Last Name \_\_\_\_\_ Title (MD, RN, etc.) \_\_\_\_\_  
Institution \_\_\_\_\_ Address \_\_\_\_\_  
City \_\_\_\_\_ State \_\_\_\_\_ Zip \_\_\_\_\_  
Phone \_\_\_\_\_ Email \_\_\_\_\_

## Patient and Caregiver Resources

**Information Kit for Newly Diagnosed Patients**

Quantity: \_\_\_\_\_

Packet of resources designed to help patients, their families and caregivers navigate a lung cancer diagnosis. Includes comprehensive information on treatments, tumor testing, clinical trials and more.



**Personalized Care Plan (English)**

Quantity: \_\_\_\_\_

A planner for recording information on diagnosis, tracking treatment and appointments, monitoring symptoms and more.



**Personalized Care Plan (Spanish)**

Quantity: \_\_\_\_\_

**Clinical Trials Flyer**

Quantity: \_\_\_\_\_

Describes how patients can benefit from participating in a clinical trial, and how to find a trial that's right for them.



**Living with a Diagnosis of Lung Cancer (English)**

Quantity: \_\_\_\_\_

Addresses basic questions on lung cancer, available treatment options, maintaining hope, and more. Especially helpful for patients who have recently been diagnosed.



**Living with a Diagnosis of Lung Cancer (Spanish)**

Quantity: \_\_\_\_\_

**Immunotherapy Booklet**

Quantity: \_\_\_\_\_

An introduction to immunotherapy, a treatment option available to some patients with lung cancer. Covers how immunotherapy works and typical side effects.

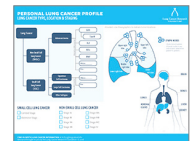


## Resources for Healthcare Professionals

**Personal Lung Cancer Profile Tear Pad (English)**

Quantity: \_\_\_\_\_

Tear-off pad for physicians to use as a tool when speaking to patients about their diagnosis and recommended treatment plan. 50 sheets per pad.



**Personal Lung Cancer Profile Tear Pad (Spanish)**

Quantity: \_\_\_\_\_

**Tumor Testing Brochure**

Quantity: \_\_\_\_\_

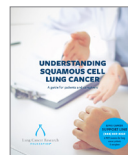
Explains the process and importance of tumor testing to help patients determine whether they may be eligible for targeted therapies.



**Squamous Cell Booklet**

Quantity: \_\_\_\_\_

Explains squamous cell carcinoma and how it can be treated.



## Community Education and Awareness

**Support Line Flyer**

Quantity: \_\_\_\_\_

Includes information about the Support Line for patients with lung cancer and their caregivers.



**Lung Cancer Fact Sheet**

Quantity: \_\_\_\_\_



Send completed forms to: Lung Cancer Research Foundation | 1 Point Place, Suite 200 | Madison, WI 53719  
Order online at: [lcrf.org/resources](http://lcrf.org/resources)